



# Florida Prison Recidivism Report: Releases from 2009 to 2021

---

FLORIDA DEPARTMENT OF CORRECTIONS

---

July 2024

## Table of Contents

Executive Summary _____	01
Recidivism Release Cohort _____	02
Recidivism Rates Over Time _____	03
Recidivism Rate by Gender _____	04
Recidivism Rates by Age at Release _____	05
Recidivism Rates by Primary Offense _____	06
Recidivism Rates - By Release Type _____	07
Re-Arrest Rates _____	08
Appendices	
Appendix A: Recidivism and Custody _____	09
Appendix B: Recidivism Rates Tables _____	10
Appendix C: Recidivism Rates - 5 Year Follow Up _____	17



# Executive Summary

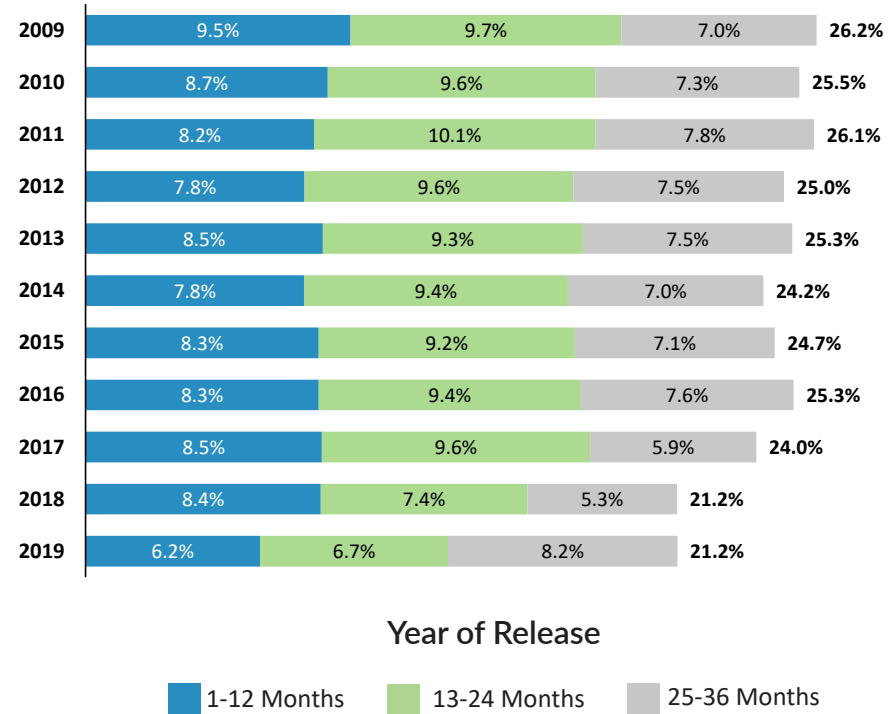
## Defining Recidivism

The Florida Department of Corrections defines recidivism as a return to prison, as the result of either a new conviction or a violation of post-prison supervision, within three years of their prison release date. The follow-up periods are calculated from prison release date to the date of readmission to prison.

## Changing Recidivism Rates

The three-year recidivism rate has decreased from 26.2% in 2009 to 21.2% in 2019, a 19.1% decrease. The recidivism rate for 2019 release cohort remained consistent with the rate for the 2018 release cohort (21.2%).

## Recidivism Rates Over Time



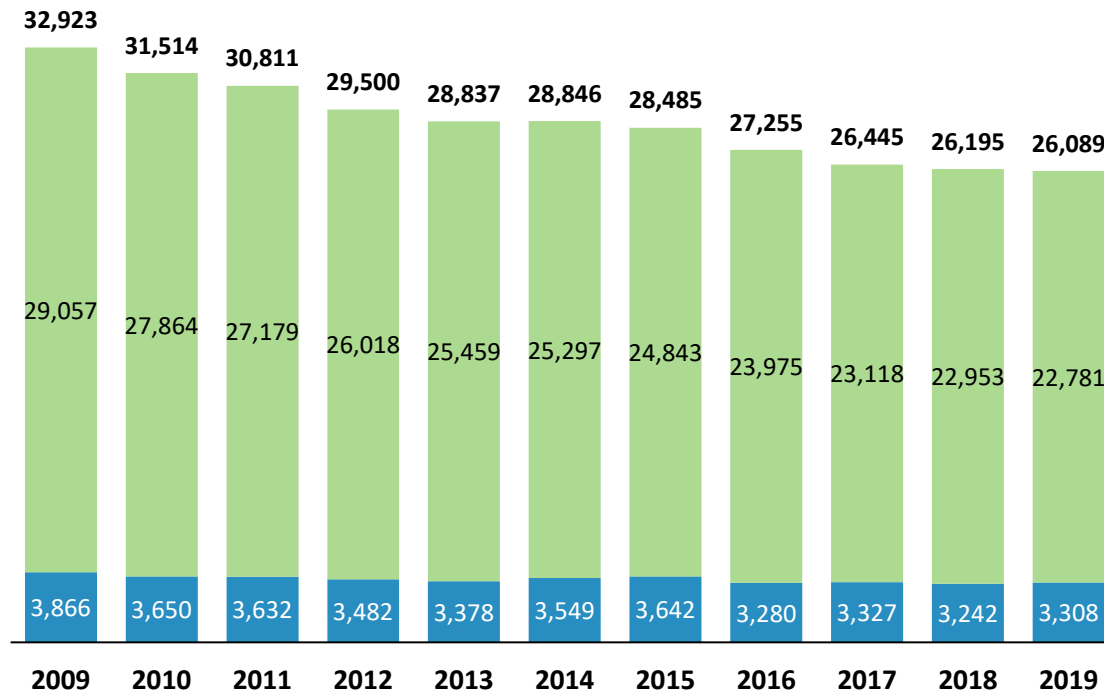
For 2019 releases, some factors found to influence an inmate’s likelihood of recidivism include:

### Major Factors

- Inmate’s sex: *male inmates* → *higher likelihood of recidivating*;
- Inmate’s age at release: *older inmates at release* → *lower likelihood of recidivating*;
- Inmate’s Offense: Inmates convicted of sexual/lewd behavior have the highest recidivism rate of 26.1%, followed closely by burglary (24.9%) and robbery (23.4%).
- Whether the inmate has a term of supervision following release: *Supervised* → *higher likelihood of recidivating*;
- Number of prior prison commitments: *More priors* → *higher likelihood of recidivating*;
- Whether the inmate is a member of a gang: *gang members* → *higher likelihood of recidivating*.

## Recidivism Release Cohort

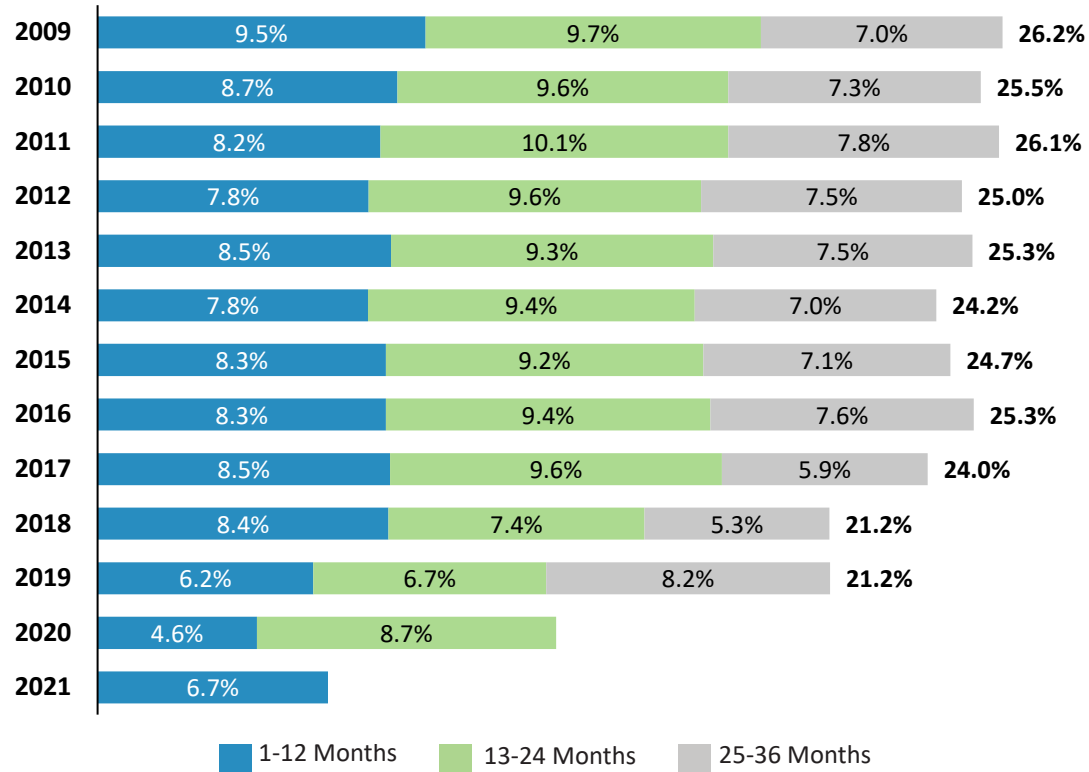
**Recidivism:** A return to prison, as the result of either a new conviction or a violation of post-prison supervision, within three years of their prison release date.



All inmates released from Florida prisons from January 1, 2009 to December 31, 2019 are included in the study, with the following exceptions:

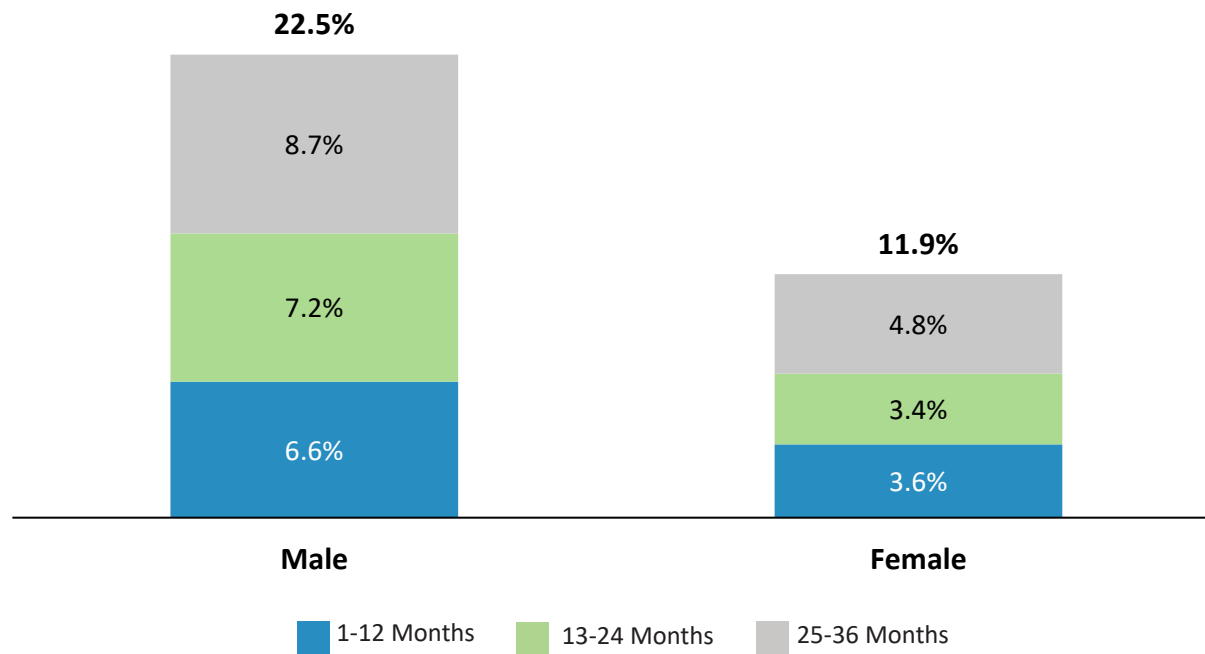
- Inmates who died or were executed have been omitted from the calculation of recidivism rates.
- Inmates with more than one release in a calendar year have only the first release included.
- Inmates with detainers in place at the time of release are omitted.
- Inmates who were not released directly from the custody of the Department of Corrections were omitted.
- Inmates with atypical release locations / situations.

# Recidivism Rates Over Time

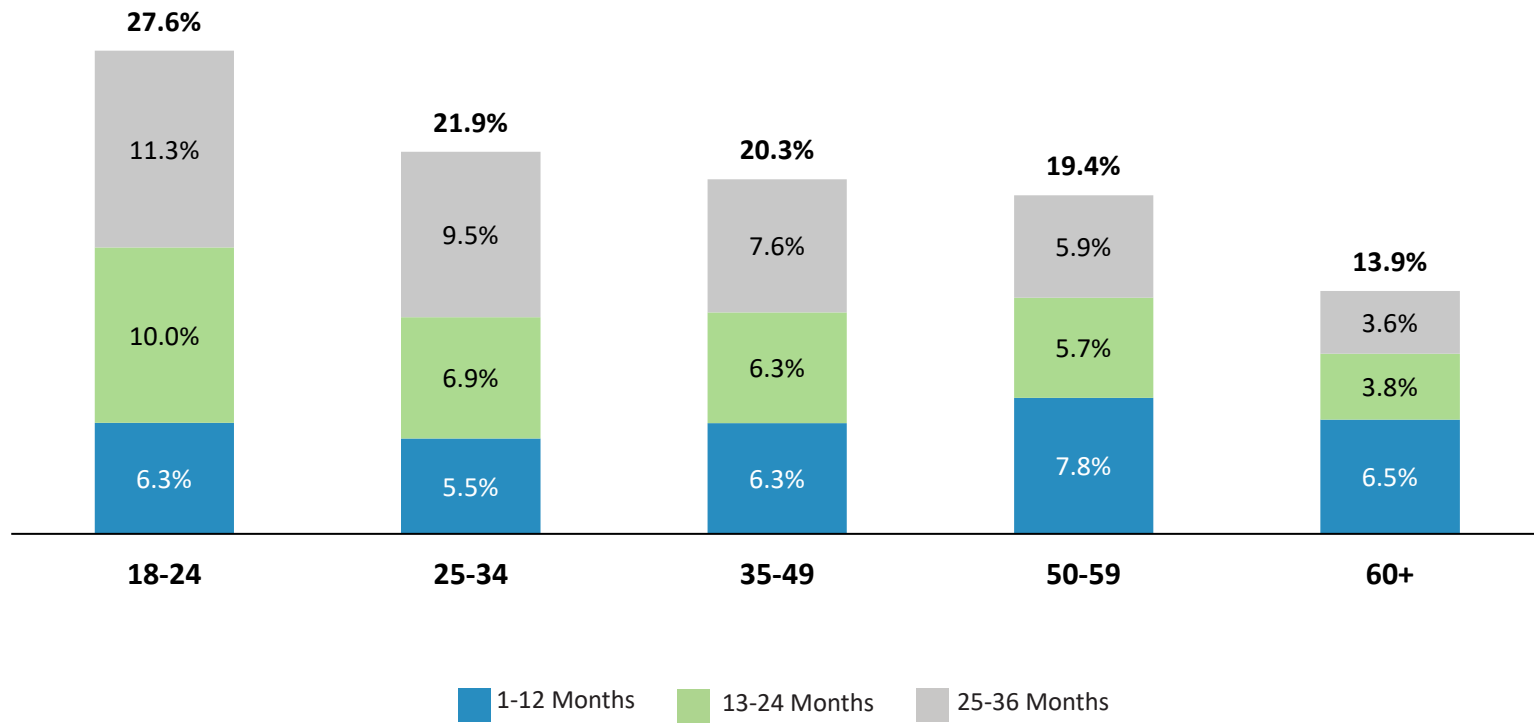


\*As of the 2023 report, 3-year recidivism rates cannot yet be computed for 2020 and 2021 releases, so only one and two-year rates are provided in the chart.

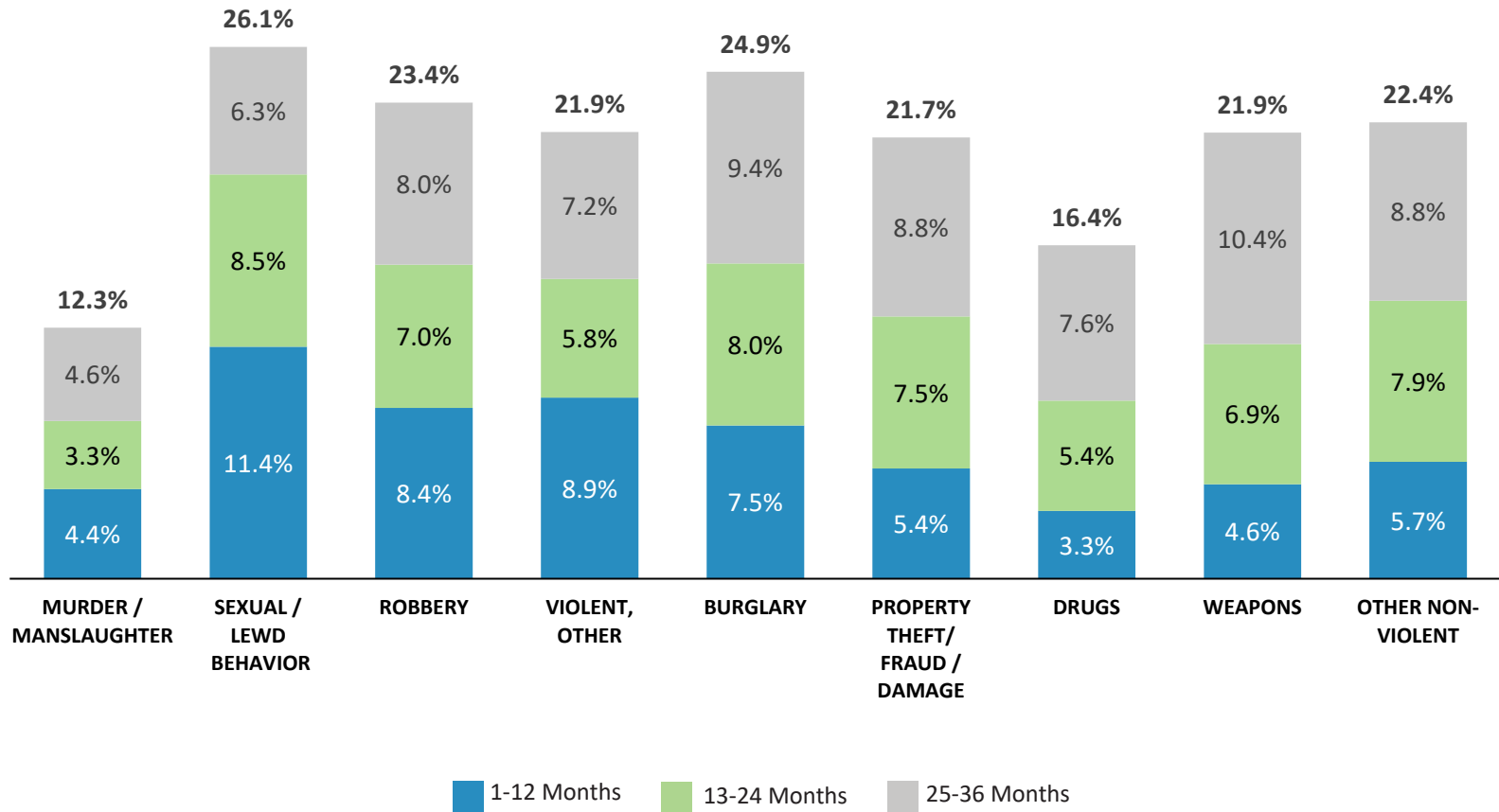
## Recidivism Rates by Gender for Inmates Released in 2019



## Recidivism Rates by Age for Inmates Released in 2019



## Recidivism Rates by Primary Offense for Inmates Released in 2019





## Recidivism Rates - By Release Type for Inmates Released in 2019

Factor	Value	Overall Releases 2019	Percent of Release Cohort	Recidivism Rate
Release Types	Expiration of Sentence (No Supervision to Follow)	16,119	61.8%	15.4%
	Conditional Release (mandatory supervision for serious offenders as specified in F.S. 947.1405)	4,787	18.3%	36.2%
	Expiration of Sentence to Probation or Community Control (Split Sentence)	3,905	15.0%	27.9%
	Program Supervision	1,022	3.9%	14.5%
	Other	256	1.0%	25.8%
Release Facility	Major Correctional Institution or Facility	20,747	79.5%	23.0%
	Work Release (State or Contracted)	3,991	15.3%	11.9%
	Work / Forestry Camp	934	3.6%	20.6%
	Re-Entry Center	315	1.2%	17.1%
	Other (BTU, Road Prison)	102	0.4%	21.6%

## Re-Arrest Rates

The Bureau of Research and Data Analysis worked with the Florida Department of Law Enforcement’s Statistical Analysis Center (SAC) to match arrest records to the release cohorts used in the recidivism calculation (all of the arrests occurred in Florida, and the lack of a post-release arrest record in Florida’s Computerized Criminal History database does not mean that the inmate was not arrested post-release in another state).

The Florida Department of Law Enforcement (FDLE) maintains Florida’s Computerized Criminal History (CCH) files, which contain arrest information submitted by Florida law enforcement agencies via fingerprint cards or Livescan, as well as judicial and custody information, submitted by the Clerks of Court and the Department of Corrections, respectively. Note that CCH data are continually updated and arrest/judicial records are subject to change as additional information is received and entered. Caution should be used when comparing individual categories, as these may be impacted by events that have not yet been recorded in the database.

### Defining Re-Arrest

Re-arrest is defined as any arrest after release from prison. The arrest could result in a new conviction, a violation of post-prison supervision, or another disposition. The follow-up periods (typically reported as three years) are calculated from prison release date to the date of arrest.

### Changing Re-Arrest Rates

The annual release cohorts have shown decreases in five-year re-arrest rates. The declining trend in the re-arrest rates during recent years is consistent with the statewide decrease in Florida arrest numbers for past years. Please refer to <http://www.fdle.state.fl.us/FSAC/Data-Statistics/UCR-Arrest-Data.aspx> for more information about statewide arrest numbers.

Release Year	12 Months			24 Months			36 Months		
	Arrested after Release	Total Released	Re-Arrest Rate	Arrested after Release	Total Released	Re-Arrest Rate	Arrested after Release	Total Released	Re-Arrest Rate
2017	10,127	26,445	38.3%	14,376	26,445	54.4%	16,237	26,445	61.4%
2018	10,249	26,195	39.1%	14,079	26,195	53.8%	15,849	26,195	60.5%
2019	9,607	26,085	36.8%	13,340	26,085	51.4%	15,503	26,085	59.4%

## Appendix A: Recidivism and Custody

Recidivism rates measure the likelihood that an inmate who is released from prison will return to a Florida prison (not county jail) within three years.

### Recidivism Rates by Facility Type and Custody at Release

An inmate’s custody is determined by criminal history as well as behavior in prison. The custody of the inmate is not just a factor in determining where inmates are housed, but also a good predictor of recidivism risk. Higher custody inmates are much more likely to re-

cidivate than low custody inmates and this relationship holds for both male and female inmates. Studies have shown that program resources produce more positive results on inmates with moderate to high risk to recidivate than on inmates with a low risk to recidivate.

The table below represents over 26,000 inmates who were released from public and private prisons from January 1, 2019 to December 31, 2019.

Custody Type	Male Inmates			Female Inmates		
	Overall Releases 2019	Percent of Male Release Cohort	Recidivism Rate	Overall Releases 2019	Percent of Female Release Cohort	Recidivism Rate
Community Custody (Work Release Only)	3,181	14.0%	13.0%	810	24.5%	7.8%
Community Custody (Excluding Work Release)	2,038	8.9%	18.2%	720	21.8%	7.8%
Minimum Custody	5,303	23.3%	21.8%	879	26.6%	14.3%
Medium Custody	8,366	36.7%	24.0%	696	21.0%	16.7%
Close Custody	3,815	16.7%	30.9%	203	6.1%	15.3%

## Appendix B: Recidivism Rate Tables

	Male				Female			
	Total Returned	Total Released	Recidivism Rate	Percent in the Male Category	Total Returned	Total Released	Recidivism Rate	Percent in the Female Category
<b>Prison Commitment History</b>								
First-time Offender	2,241	12,745	17.6%	55.9%	227	2,373	9.6%	71.7%
Repeat Offender	2,893	10,036	28.8%	44.1%	165	935	17.6%	28.3%
Total	5,133	22,781	22.5%	100.0%	392	3,308	11.9%	100.0%
<b>Post-Prison Supervision to Follow</b>								
No	2,827	8,808	32.1%	38.7%	195	1,094	17.8%	33.1%
Yes	2,306	13,973	16.5%	61.3%	197	2,214	8.9%	66.9%
Total	5,133	22,781	22.5%	100.0%	392	3,308	11.9%	100.0%
<b>Gang Association</b>								
No	3,682	18,596	19.8%	81.6%	364	3,202	11.4%	96.8%
Yes	1,451	4,185	34.7%	18.4%	28	106	26.4%	3.2%
Total	5,133	22,781	22.5%	100.0%	392	3,308	11.9%	100.0%
<b>Sentence Length</b>								
5 Years or Less	3,991	17,917	22.3%	78.6%	367	3,034	12.1%	91.7%
Between 5-10 Year	704	3,092	22.8%	13.6%	23	203	11.3%	6.1%
More Than 10 Year	438	1,772	24.7%	7.8%	2	71	2.8%	2.1%
Total	5,133	22,781	22.5%	100.0%	392	3,308	11.9%	100.0%
<b>Age at Release</b>								
Under 25	709	2,474	28.7%	10.9%	40	235	17.0%	7.1%
25-34	1,805	7,685	23.5%	33.7%	161	1,309	12.3%	39.6%
35-49	1,805	8,333	21.7%	36.6%	149	1,299	11.5%	39.3%
50-59	654	3,162	20.7%	13.9%	36	398	9.0%	12.0%
60+	160	1,127	14.2%	4.9%	6	67	9.0%	2.0%
Total	5,133	22,781	22.5%	100.0%	392	3,308	11.9%	100.0%

## Appendix B: Recidivism Rate Tables

	Male				Female			
	Total Returned	Total Released	Recidivism Rate	Percent in the Male Category	Total Returned	Total Released	Recidivism Rate	Percent in the Female Category
<b>Mental Health Status at Release</b>								
Inmate does not require on-going treatment	4,238	19,347	21.9%	84.9%	193	1,996	9.7%	60.3%
Inmate Requires on-going treatment	895	3,434	26.1%	15.1%	199	1,312	15.2%	39.7%
Total	5,133	22,781	22.5%	100.0%	392	3,308	11.9%	100.0%
<b>Substance Abuse Treatment Needed</b>								
No	1,300	6,552	19.8%	28.8%	54	597	9.0%	18.0%
Yes	3,833	16,229	23.6%	71.2%	338	2,711	12.5%	82.0%
Total	5,133	22,781	22.5%	100.0%	392	3,308	11.9%	100.0%
<b>Primary Offense</b>								
Murder/Manslaughter	68	503	13.5%	2.2%	2	65	3.1%	2.0%
Sexual/Lewd Behavior	315	1,208	26.1%	5.3%	6	21	28.6%	0.6%
Robbery	411	1,717	23.9%	7.5%	24	143	16.8%	4.3%
Violent, Other	834	3,560	23.4%	15.6%	57	503	11.3%	15.2%
Burglary	970	3,807	25.5%	16.7%	59	327	18.0%	9.9%
Property Theft/Fraud/Damage	765	3,128	24.5%	13.7%	100	865	11.6%	26.1%
Drugs	892	5,054	17.6%	22.2%	117	1,110	10.5%	33.6%
Weapons	398	1,750	22.7%	7.7%	3	80	3.8%	2.4%
Other	480	2,054	23.4%	9.0%	24	194	12.4%	5.9%
Total (excluding missing)	5,133	22,781	22.5%	100.0%	392	3,308	11.9%	100.0%

## Appendix B: Recidivism Rate Tables

	Male				Female			
	Total Returned	Total Released	Recidivism Rate	Percent in the Male Category	Total Returned	Total Released	Recidivism Rate	Percent in the Female Category
<b>Custody at Release</b>								
Community	783	5,219	15.0%	22.9%	119	1,530	7.8%	46.3%
Minimum	1,155	5,303	21.8%	23.3%	126	879	14.3%	26.6%
Medium	2,004	8,366	24.0%	36.7%	116	696	16.7%	21.0%
Close	1,179	3,815	30.9%	16.7%	31	203	15.3%	6.1%
Total (excluding missing)	5,121	22,703	22.6%	99.7%	392	3,308	11.9%	100.0%
<b>Risk of Recidivating</b>								
1	268	3,182	8.4%	14.0%	66	1,055	6.3%	31.9%
2	595	3,934	15.1%	17.3%	75	772	9.7%	23.3%
3	583	3,164	18.4%	13.9%	75	648	11.6%	19.6%
4	2,117	7,945	26.6%	34.9%	122	606	20.1%	18.3%
5	1,330	3,344	39.8%	14.7%	46	173	26.6%	5.2%
Total (excluding missing)	4,893	21,569	22.7%	94.7%	384	3,254	11.8%	98.4%
<b>TABE Score at Release</b>								
0.1-5.9	1,847	7,466	24.7%	32.8%	99	763	13.0%	23.1%
6.0-8.9	1,049	4,690	22.4%	20.6%	88	678	13.0%	20.5%
9.0-12.9	1,468	7,054	20.8%	31.0%	122	1,155	10.6%	34.9%
Total (excluding missing)	4,364	19,210	22.7%	84.3%	309	2,596	11.9%	78.5%

## Appendix B: Recidivism Rate Tables - County Level Recidivism

Please use the calculated return rate with caution if the total releases to that county are low

County of Conviction (Primary Offense)	2017			2018			2019		
	Total Returned	Total Released	Return Rate (36 Month)	Total Returned	Total Released	Return Rate (36 Month)	Total Returned	Total Released	Return Rate (36 Month)
Alachua	174	587	29.6%	175	600	29.2%	162	602	26.9%
Baker	27	87	31.0%	28	117	23.9%	37	133	27.8%
Bay	203	855	23.7%	157	704	22.3%	167	794	21.0%
Bradford	19	61	31.1%	16	74	21.6%	32	81	39.5%
Brevard	207	843	24.6%	201	940	21.4%	220	972	22.6%
Broward	326	1,804	18.1%	263	1,606	16.4%	236	1,401	16.8%
Calhoun	9	34	26.5%	10	40	25.0%	13	49	26.5%
Charlotte	46	248	18.5%	40	227	17.6%	44	267	16.5%
Citrus	67	260	25.8%	61	289	21.1%	68	319	21.3%
Clay	61	271	22.5%	59	248	23.8%	71	264	26.9%
Collier	64	266	24.1%	43	261	16.5%	44	237	18.6%
Columbia	75	247	30.4%	95	312	30.4%	74	276	26.8%
Miami-Dade	298	1,291	23.1%	226	1,257	18.0%	245	1,234	19.9%
Desoto	30	114	26.3%	35	104	33.7%	33	105	31.4%
Dixie	16	36	44.4%	18	54	33.3%	7	61	11.5%
Duval	413	1,766	23.4%	406	1,649	24.6%	368	1,527	24.1%
Escambia	182	711	25.6%	166	792	21.0%	138	720	19.2%
Flagler	25	88	28.4%	33	98	33.7%	24	116	20.7%
Franklin	14	38	36.8%	9	49	18.4%	7	37	18.9%
Gadsden	30	106	28.3%	23	85	27.1%	15	81	18.5%
Gilchrist	6	35	17.1%	11	37	29.7%	15	51	29.4%
Glades	4	18	22.2%	6	20	30.0%	7	29	24.1%
Gulf	5	53	9.4%	8	40	20.0%	7	50	14.0%
Hamilton	4	18	22.2%	0	24	0.0%	3	31	9.7%
Hardee	21	80	26.3%	14	59	23.7%	10	61	16.4%
Hendry	10	55	18.2%	14	59	23.7%	23	99	23.2%

## Appendix B: Recidivism Rate Tables - County Level Recidivism

Please use the calculated return rate with caution if the total releases to that county are low

County of Conviction (Primary Offense)	2017			2018			2019		
	Total Returned	Total Released	Return Rate (36 Month)	Total Returned	Total Released	Return Rate (36 Month)	Total Returned	Total Released	Return Rate (36 Month)
Hernando	84	297	28.3%	70	331	21.1%	88	384	22.9%
Highlands	39	172	22.7%	38	182	20.9%	44	202	21.8%
Hillsborough	493	1,835	26.9%	366	1,826	20.0%	350	1,852	18.9%
Holmes	16	78	20.5%	9	68	13.2%	17	88	19.3%
Indian River	52	198	26.3%	50	205	24.4%	55	240	22.9%
Jackson	29	143	20.3%	30	154	19.5%	34	143	23.8%
Jefferson	6	27	22.2%	6	22	27.3%	3	20	15.0%
Lafayette	3	12	25.0%	3	16	18.8%	1	12	8.3%
Lake	75	347	21.6%	60	334	18.0%	67	290	23.1%
Lee	162	681	23.8%	120	652	18.4%	101	591	17.1%
Leon	159	600	26.5%	153	684	22.4%	123	623	19.7%
Levy	27	77	35.1%	24	103	23.3%	27	80	33.8%
Liberty	9	27	33.3%	8	29	27.6%	8	25	32.0%
Madison	6	30	20.0%	12	39	30.8%	8	53	15.1%
Manatee	98	397	24.7%	99	486	20.4%	91	446	20.4%
Marion	170	728	23.4%	143	644	22.2%	151	655	23.1%
Martin	47	266	17.7%	30	230	13.0%	26	194	13.4%
Monroe	38	162	23.5%	21	148	14.2%	34	158	21.5%
Nassau	22	118	18.6%	25	91	27.5%	25	121	20.7%
Okaloosa	76	347	21.9%	68	368	18.5%	82	414	19.8%
Okeechobee	39	159	24.5%	40	156	25.6%	33	153	21.6%
Orange	255	1,147	22.2%	187	1,073	17.4%	167	1,033	16.2%
Osceola	71	339	20.9%	76	399	19.0%	60	352	17.0%
Palm Beach	251	1,070	23.5%	218	1,029	21.2%	198	946	20.9%
Pasco	139	644	21.6%	100	602	16.6%	109	642	17.0%
Pinellas	383	1,490	25.7%	333	1,433	23.2%	271	1,373	19.7%



## Appendix B: Recidivism Rate Tables - County Level Recidivism

Please use the calculated return rate with caution if the total releases to that county are low

County of Conviction (Primary Offense)	2017			2018			2019		
	Total Returned	Total Released	Return Rate (36 Month)	Total Returned	Total Released	Return Rate (36 Month)	Total Returned	Total Released	Return Rate (36 Month)
Polk	327	1,327	24.6%	320	1,479	21.6%	353	1,535	23.0%
Putnam	43	216	19.9%	67	215	31.2%	77	252	30.6%
St. Johns	75	228	32.9%	83	253	32.8%	79	295	26.8%
St. Lucie	115	550	20.9%	102	592	17.2%	128	583	22.0%
Santa Rosa	41	208	19.7%	31	177	17.5%	46	188	24.5%
Sarasota	84	396	21.2%	74	389	19.0%	78	387	20.2%
Seminole	100	450	22.2%	79	412	19.2%	86	396	21.7%
Sumter	17	81	21.0%	13	104	12.5%	21	137	15.3%
Suwannee	42	156	26.9%	52	165	31.5%	46	198	23.2%
Taylor	29	118	24.6%	23	107	21.5%	24	108	22.2%
Union	13	42	31.0%	8	25	32.0%	12	44	27.3%
Volusia	307	1,078	28.5%	239	970	24.6%	289	1,058	27.3%
Wakulla	15	39	38.5%	8	50	16.0%	9	36	25.0%
Walton	34	119	28.6%	19	108	17.6%	19	101	18.8%
Washington	19	69	27.5%	19	93	20.4%	14	82	17.1%
<b>All</b>	<b>6,346</b>	<b>26,444</b>	<b>24.0%</b>	<b>5,543</b>	<b>26,195</b>	<b>21.2%</b>	<b>5,525</b>	<b>26,089</b>	<b>21.2%</b>

## Appendix B: Recidivism Rate Tables - Circuit Level Recidivism

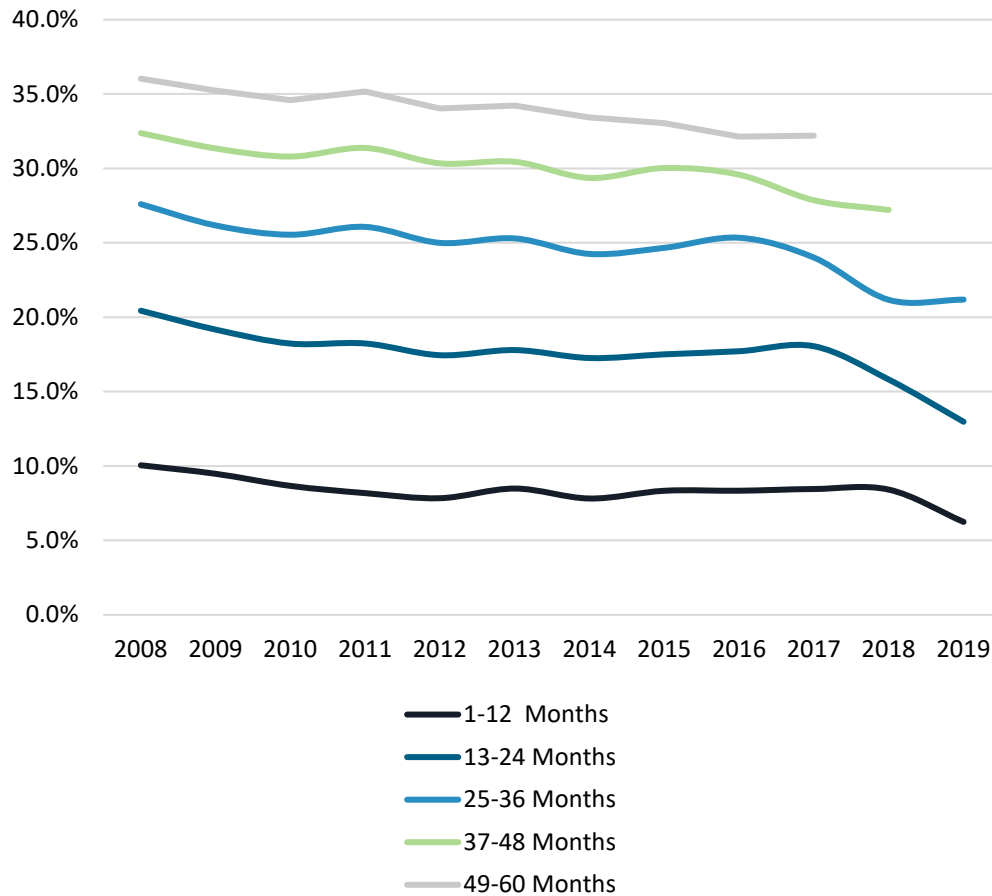
Please use the calculated return rate with caution if the total releases to that circuit are low

Circuit of Conviction (Primary Offense)	2017			2018			2019		
	Total Returned	Total Released	Return Rate (36 Month)	Total Returned	Total Released	Return Rate (36 Month)	Total Returned	Total Released	Return Rate (36 Month)
1	333	1,385	24.0%	284	1,445	19.7%	285	1,423	20.0%
2	233	837	27.8%	207	919	22.5%	165	822	20.1%
3	175	617	28.4%	203	717	28.3%	163	739	22.1%
4	496	2,155	23.0%	490	1,988	24.6%	464	1,912	24.3%
5	413	1,713	24.1%	347	1,702	20.4%	395	1,785	22.1%
6	522	2,134	24.5%	433	2,035	21.3%	380	2,015	18.9%
7	450	1,610	28.0%	422	1,536	27.5%	469	1,721	27.3%
8	266	889	29.9%	262	956	27.4%	285	991	28.8%
9	326	1,486	21.9%	263	1,472	17.9%	227	1,385	16.4%
10	387	1,579	24.5%	372	1,720	21.6%	407	1,798	22.6%
11	298	1,291	23.1%	226	1,257	18.0%	245	1,234	19.9%
12	212	907	23.4%	208	979	21.2%	202	938	21.5%
13	493	1,835	26.9%	366	1,826	20.0%	350	1,852	18.9%
14	281	1,232	22.8%	233	1,099	21.2%	252	1,206	20.9%
15	251	1,070	23.5%	218	1,029	21.2%	198	946	20.9%
16	38	162	23.5%	21	148	14.2%	34	158	21.5%
17	326	1,804	18.1%	263	1,606	16.4%	236	1,401	16.8%
18	307	1,293	23.7%	280	1,352	20.7%	306	1,368	22.4%
19	253	1,173	21.6%	222	1,183	18.8%	242	1,170	20.7%
20	286	1,268	22.6%	223	1,219	18.3%	219	1,223	17.9%
<b>All</b>	<b>6,347</b>	<b>26,445</b>	<b>24.0%</b>	<b>5,543</b>	<b>26,195</b>	<b>21.2%</b>	<b>5,525</b>	<b>26,089</b>	<b>21.2%</b>

## Appendix C: Recidivism Rate - 5 Year Follow-Up

According to the recidivism rates in the table below, approximately one third of inmates released have returned to Florida prisons within five years of their prison release date. However, the overall return rates have decreased from 35.2% for Cohort 2009 to 32.2% for Cohort 2017. It appears that most of returns happen within the first three years of the prison release date.

Recidivism Rates Over Time



Year of Release	12 Months	24 Months	36 Months	48 Months	60 Months
2009	9.5%	19.2%	26.2%	31.3%	35.2%
2010	8.7%	18.2%	25.5%	30.8%	34.6%
2011	8.2%	18.2%	26.1%	31.4%	35.2%
2012	7.8%	17.5%	25.0%	30.3%	34.0%
2013	8.5%	17.8%	25.3%	30.4%	34.2%
2014	7.8%	17.3%	24.2%	29.4%	33.4%
2015	8.3%	17.5%	24.7%	30.0%	33.0%
2016	8.3%	17.7%	25.3%	29.6%	32.1%
2017	8.5%	18.1%	24.0%	27.9%	32.2%
2018	8.4%	15.8%	21.2%	27.2%	
2019	6.2%	13.0%	21.2%		