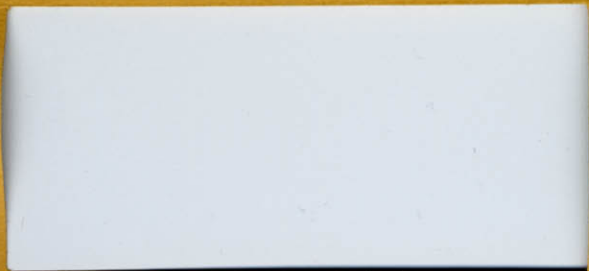


**FLORIDA
CORRECTIONAL
INSTITUTION**



**"A BRIDGE OVER
TROUBLED WATERS"**



**Most people are lonely because
they build walls
instead of bridges.**

Emerson

“BRIDGE OVER TROUBLED WATERS”

The float pictured below was constructed by the inmates and staff of the institution and represented the institution's first float entry in a parade.

The float was twelve feet wide and sixty feet long and the focal points were a 36 foot bridge and a human Christmas tree consisting of the combined choirs of both the men's and women's units. The base of the float was stuffed with more than 70,000 white napkins and the bridge was decorated with 10,000 avocado and pink artificial flowers made by inmates and staff. The lamp posts on the bridge were labeled with ten of the various rehabilitative programs of the institution. A male and female inmate stand at the rear of the float with heads bowed depicting their state when entering the institution and approach the “Bridge Over Troubled Waters”. A male inmate and his family appear on the front of the float depicting a successful crossing of the bridge and re-entry into society.



FLORIDA CORRECTIONAL INSTITUTION

LOWELL, FLORIDA

ANABEL P. MITCHELL

SUPERINTENDENT



PREFACE

Florida Correctional Institution is Florida's only facility for women and has been in operation since 1956. A men's unit is also attached to the institution.

This institution believes in the inherent dignity and worth of every human being including those within the confines of this institution. The institutional motto, "BRIDGE OVER TROUBLED WATERS", denotes the attempt of this institution to provide progressive and innovative programs which will "bridge" the gap between a traumatic incarceration and a successful release.

During Christmas of 1970 the institution entered its first float, depicted on the front cover, in Ocala's Sunshine Christmas Parade. FCI's entry became the first float ever to win dual honors of "most original" and "best amateur" awards. Its theme "BRIDGE OVER TROUBLED WATERS" vividly depicts the institution efforts of resocialization of its residents.

The institutional themesong, "NOTHING IS IMPOSSIBLE", gives direction and motivational impetus to the individualized, goal-oriented programs and activities to which the administration and employees of Florida Correctional Institution are energetically committed.

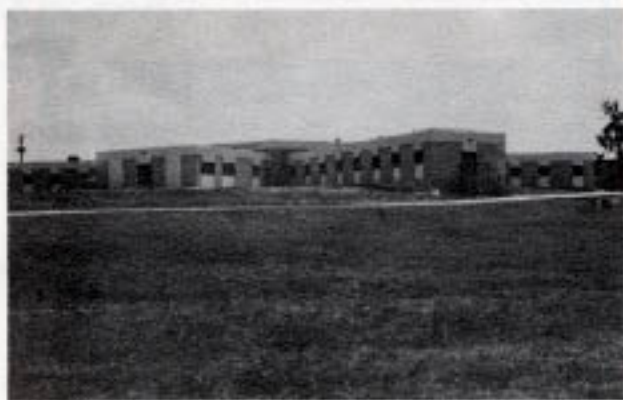
WOMEN'S UNIT



MEN'S UNIT



NEW WOMEN'S DORMATORY



ORIENTATION

Women committed to this institution are initially housed in the institutional Reception Center for a four-week period of orientation.

The staff of the center, the Correctional Counselors, have been carefully selected with an emphasis on their ability to relate to a newly-committed woman in a warm, understanding, professional and limit-setting manner. The Orientation program has been developed to acquaint the new inmate with the total philosophy, policies, rules, programs and leisure-time activities of the institution, and what is expected of her. Careful scheduling affords ample time for the interviews, examinations and testing necessary for diagnostic studies while provision is also made for recreational activities, religious services and special work assignments within the Center. The reception period becomes one of information-sharing between staff and inmate, designed to set the tone of the period of incarceration, and to provide the insight and motivation necessary for resocialization.

Men assigned to the institution have previously undergone a similar reception process at the Reception and Medical Center for men at Lake Butler. They further undergo an abbreviated institutional orientation similar to the one for women.



CLASSIFICATION

In order that a correctional program may be effective, organized procedures are necessary to insure the best kind of coordination, continuity of diagnosis and individualized program planning. "Classification" is the term used to designate the organized procedure.

Verifications of marriages, divorces, employment and education are obtained. The inmate's family is contacted in order to gain more knowledge of the individual's background. Other agencies which have had contact with the individual are also asked to provide information.

The inmate is interviewed extensively regarding family background, education, employment, religious training, marital information, prior record, leisure-time activities, resources and causative factors.

All of this information, as well as the results of tests and examinations, are organized and evaluated.

A workable and realistic program is then planned so that the inmate can benefit from his or her incarceration and become a better citizen upon release.

Throughout incarceration, the progress of the inmate is continually evaluated, and when necessary, the program is changed so that the treatment process may be more realistic and effective.



Every inmate in Florida Correctional Institution is encouraged to seek help through counseling during his stay in the institution. Through a close relationship with someone or a group who accepts each individual as worthy, a person can gradually know himself, accept himself as a person with some abilities and some limitations, and can also accept responsibility for others.

Among the several types of counseling that are available are the following:

“CRISIS COUNSELING” for the person who is upset or concerned about one particular problem and needs help in one or two interviews.

“DEVELOPMENTAL COUNSELING” which extends over several weeks or months and consists of regular sessions with a counselor or in a group. Problems that continually cause a person trouble and that have been a part of the person a long time are dealt with. The counselee gains insight into feelings and behavior and explores ways of coping with problems. Special rap sessions offer drug abusers an opportunity to talk with other persons who have similar problems.

Each employee of the institution is encouraged to utilize every opportunity for counseling experiences. (The education staff utilize their training and experiences as counselors and provisions are made for counseling interns.)



One of the fundamental responsibilities of a correctional facility is the custody and control of inmates. However, this institution feels that good control cannot be consistently maintained without energizing it with positive correctional and training resources. Perhaps the soundest program and safest measure that this institution has is the existence of a positive program of inmate activities.

Effective supervision has become the responsibility of each employee of this institution although the Correctional Staff forms the nucleus for this primary function of the institution. In order to accomplish the objectives of the institution, the Correctional Staff serve as counselors and leaders and maintain proper progressive attitudes in dealing with the population.

The institution has implemented a positive program of control to maintain the necessary order for the rehabilitative programs to function adequately with the least possible friction and punishment.

It is felt that good morale is the soundest basis for good discipline and is not necessarily obtained by arbitrary rules or hard work alone, but rather comes with the development of activities which provide for the inmates' mental and physical needs, fair treatment, and responsible opportunities to use his or her time constructively.



The academic program of the institution has been designed to "bridge" the gap between prior educational achievement and those skills deemed necessary for successful productivity after release.

The academic program is a voluntary one with each inmate being encouraged and counseled to participate in the phases of the program that can best meet his or her needs. An inmate entering the academic program will do so for one of the following reasons:

LITERACY TRAINING, a program that provides an opportunity to become functionally literate which will enable him or her to become a more productive member of society.

HIGH SCHOOL GRADUATION, which provides occupational eligibility and fulfills certain prerequisites for vocational training.

PRE-VOCATIONAL PREPARATION, which enables the student to attain at approximately the eighth grade level which provides eligibility for most vocational courses.

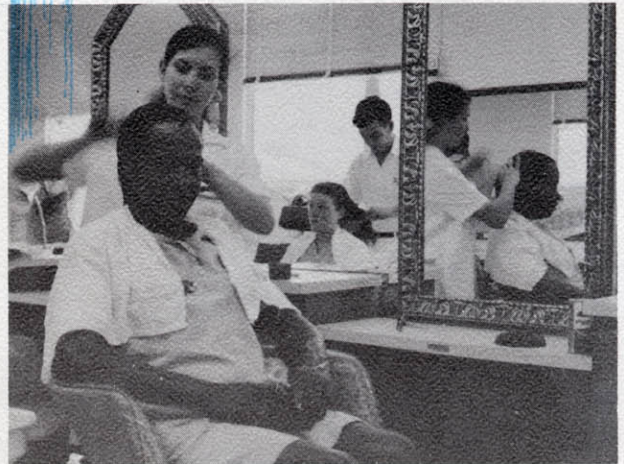
JUNIOR COLLEGE ENROLLMENT, which provides an opportunity for high school graduates to begin or continue higher education studies begun prior to incarceration which may lead to an Associate Arts degree within the institution or after release.

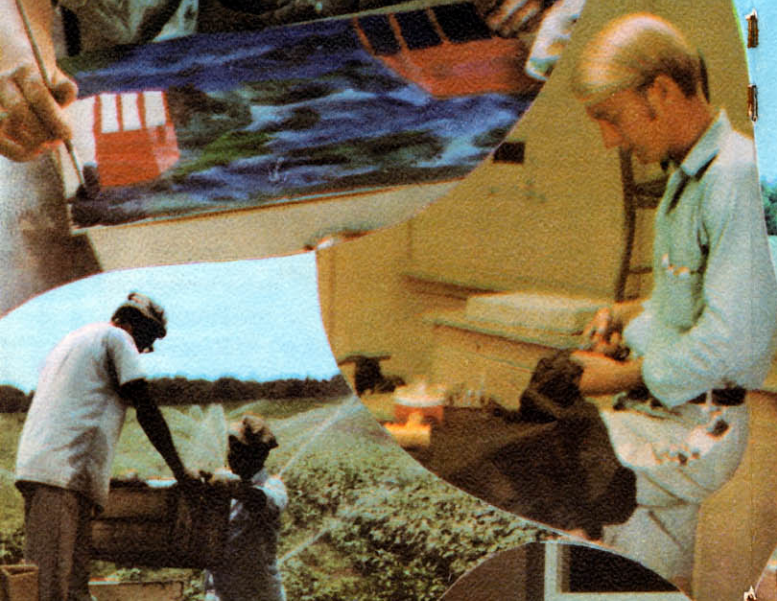


A comprehensive vocational education program has been developed which provides opportunities for inmates to receive training in areas in which there is considerable demand for applicants. The programs are designed to train inmates for entry level employment after release. Among the various vocational training areas are the following:

Air Conditioning
Automotive Tuneup
Baking
Bookkeeping
Business School
Carpentry
Clerk-Typist
Commercial Art
Computer Programming
Cooking
Cosmetology
Dental Assistant
Drafting
Electricity
Electronics
Encoding
Filing
Garment Machines
Graphic Arts

Horticulture
Keypunch
Laundry
Library Aide
Machine Tool
Masonry
Meat Cutting
Medical Secretary
Nurses Aide
Painting
Photography
Plumbing
Record Keeping
Sign Painting
Small Engines
Tailoring
Typing
Ward Clerk
Welding





In addition to the extensive vocational training courses which are available to inmates, work experiences are provided through an industries program that embraces the following areas of production:

A DATA PROCESSING CENTER began production in January of 1970 and consists of keypunch and encoder production. This program provides services to the Division of Family Services through a contractual agreement. Thirty women are involved in this program in the training and production areas and production is performed on 10 IBM card punches and verifiers and 20 encoders.

A GARMENT FACTORY provides work opportunities for 100 women and produces an extensive array of garments and items for institutional use and for sale to other agencies.

A FARM OPERATION produces vegetables, corn and hay which are consumed within the institution or sold to other institutions within the Division of Corrections. This work program provides work experiences for twelve or more men depending upon harvest season.

AN ORANGE GROVE is maintained by the institution and the fruit harvested is consumed by this institution. This program provides work experiences for 12 or more men depending upon the harvest season.



An experience with God is most basic to any "Bridge Over Troubled Waters." The religious program at Florida Correctional Institution is a well-rounded one, designed to meet the needs of every inmate regardless of an individual's religious background or preference. The religious program makes a sincere attempt to bring every individual to an awareness of the importance of an experience with God.

The chaplaincy services include the traditional, such as worship services and personal counseling. Such activities receive a great deal of emphasis with a large variety of groups and persons from the community presenting contemporary programs. The new and exciting presentations have taken the form of "Rock-Folk" Musicals, drama, spiritual Sing Outs and more traditional presentations.

The religious education opportunities include an ample supply of periodicals and pamphlets, correspondence Bible courses, and then, a unique opportunity through a co-educational Bible Study Course. This program involves ministers and lay persons from the community teaching the twelve weekly sessions.

Various musical groups contribute to the worship services and also minister in outside appearances such as churches, retreats and other institutions.

Definite plans are underway for involving inmates in volunteer services to churches in such activities as Vacation Bible Schools, Day Camps and other short time events.

As a result of this and many other approaches, numerous inmates have found God to be the "Bridge Over Troubled Waters."

Constructive programs of leisure-time activities are a very integral part of the overall institutional program. The staff attempts to provide meaningful activities that not only are enjoyable but which also serve as emotional and physical outlets.

All dormitories at both the men's and women's units contain TV viewing areas as well as dayrooms which provide space for various leisure-time activities including craft work and other recreational pursuits. Hobby shops are provided for inmate activity in various areas.



The recreation programs of the institution are varied and are geared to the needs and desires of both men and women inmates. Opportunities are provided for individual recreational activities as well as team sports in such areas as touch football, volleyball, softball, swimming, tennis, basketball and others.

Movies are shown weekly at both units of the institution and special recreational events such as talent shows, game nights and other activities are provided to enable each inmate, regardless of age or other attributes, to choose from a wide range of activities.



A comprehensive ARTS AND CRAFTS PROGRAM has been developed to give the inmates a creative means of expression. Art learnings are seen as a means to improve the individual's understanding of himself and his environment, rather than being an end in themselves.

The program involves a broad spectrum of art experiences and art history, and criticism is included with all studio work. The areas of work include beginning art, ceramics, fabrics, jewelry, leatherwork, painting, drawing and commercial art.

Inmate art work is exhibited at various places around the institution, with larger exhibits for special occasions. Inmates are also given the opportunity to sell their work at the arts and crafts center within the institution.

A meaningful MUSIC PROGRAM is provided for the development of aesthetic sensitivity through active involvement in listening, singing, instrumental playing and creative musical activities.

The music program not only attempts to develop discriminative habits in listening to music but offers practical musical training in vocal and instrumental music. Provision is made for musical groups to entertain within the institution as well as in the community.

A well-equipped library offers opportunities for recreational reading and use of listening centers.



The institution maintains a carefully planned program providing personal services to every inmate.

THE FOOD SERVICE DEPARTMENT prepares and serves three meals a day for all inmates, including those on work release. They serve meals to institutional staff and provide refreshments for special occasions and inmate functions. Menus are well-balanced and varied and adequately meet daily nutrition requirements.

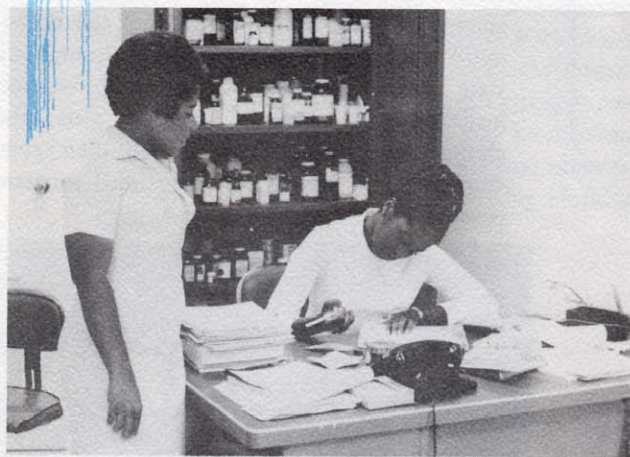
THE CLOTHING SECTION of the institution is responsible for the issue and identification of inmate clothing. All women inmates are initially issued 4 uniforms, 2 slips, 2 bras, 2 pair of pants, 1 outer jacket, 2 chambray shirts, 2 sweat shirts, 2 tee-shirts, 1 raincoat, 3 pairs of socks, 1 pair of loafers, 2 pairs of blue jeans, 2 pajama sets and 1 duster. Male inmates, upon arrival, are issued 4 pair of trousers, 4 shirts, 4 tee-shirts, 4 pair of shorts, 5 pair of socks, 1 pair of shoes, 1 jacket, 2 pairs of pajamas. All inmates are provided with sheets, pillow cases, wash cloths, towels and necessary items.

THE MEDICAL NEEDS of inmates are met by the institutional Medical Department which is under the direction of a resident physician assisted by a staff of registered nurses. The Medical Department provides twenty-four hour service to both units of the institution.

All new inmates, at admission, are given a thorough and complete physical examination to determine their health status, and this is followed by periodic routine physical examinations as long as they remain in the institution.

Sick calls are held at both units of the institution which inmates may voluntarily avail themselves. Special medical services provided by the institution include surgical services. Minor surgery is performed in the institution hospital while major operations are referred to the local hospital. Obstetrical and gynecologic services are provided women inmates who are pregnant at the time of their admission. Pre-natal care is provided in the institutional hospital while deliveries are performed at the local hospital. Optometric services are provided through a contract with a local optometrist and glasses are prescribed to those inmates who need them. Medical consultations are arranged for inmates where it is deemed necessary by the institutional medical staff and inmates are referred to appropriate consultants as part of accepted medical practice. In addition to local medical facilities and consultants, the services and facilities of the J. Hillis Miller Health Center and Veterans Hospital in Gainesville are utilized.

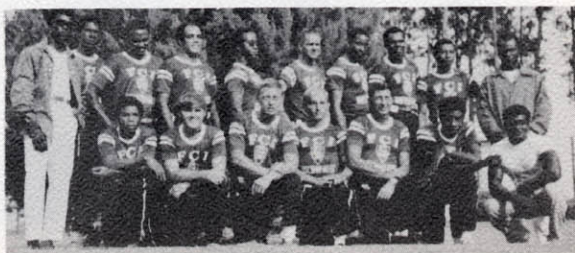
Dental services to inmates are provided by a resident Dental Intern and inmate assistants. Each inmate upon arrival is given a dental examination which includes soft tissue examination, missing teeth, teeth that have restorations, and future restorations needed as indicated by clinical inspection. Emergency dental service is available to all inmates in the institution.



OPERATION TEENAGER is an educational and preventive crime program in which inmates travel throughout the state speaking to high school, college, civic and church groups. Inmates who are sincerely interested in helping others as well as themselves by relating their past experiences find this program a rewarding experience in their institutional lives.

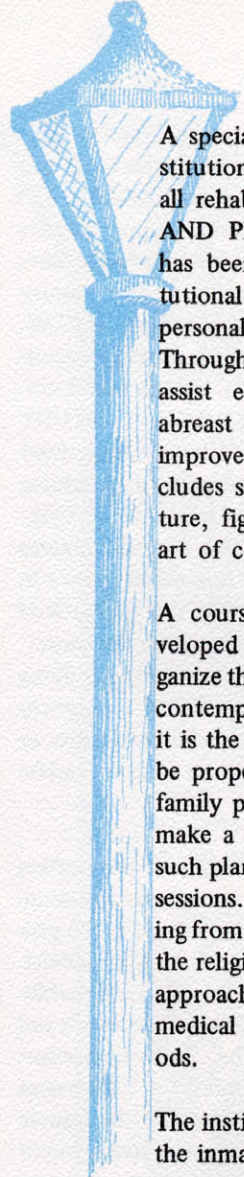
THE F.C.I. JAYCEES is a service organization for men. In February, 1969 initial contact was made between the Ocala Jaycees and the men of FCI for what was to become the first institutional chapter in the Florida Division of Corrections. In April, 1969, the Charter Banquet was held with Congressman Bill Chappell as guest speaker. Jaycee projects include New Hope School, Youth Conservation Camp, Leadership Training Courses and a Drug Abuse Program. The FCI Jaycees have been "blue chip" since the initial year of operation; and the chapter has consistently placed first in district competition and has been among the top four clubs in the state parade of clubs.

A chapter of **ALCOHOLICS ANONYMOUS** is active at both the men's and women's units of the institution. The A.A. meetings are open to all inmates and consist of discussions pertaining to both alcohol and drug use, movies showing prime examples of what drugs and alcohol can do to the mind and body and speakers from throughout the state who are members of A.A. groups outside the institution. A panel of members visit schools, churches and civic clubs to tell their personal stories and to present an educational program to combat the use of alcohol and drugs.



One of the most innovative and progressive programs of the Florida Division of Corrections and this institution is the provision for **COMMUNITY RELEASE**. This program provides opportunities for inmates to be given the privilege of extension of the limits of their confinement to the community for participation in the following programs: **COMMUNITY WORK RELEASE** which provides opportunities for selected inmates to work at paid employment in the community; **COMMUNITY STUDY RELEASE** which allows selected inmates to attend an educational facility or participate in a training program in the community; **COMMUNITY VOLUNTEER SERVICES** which allows selected inmates to voluntarily serve a public or non-profit agency in the community; and **COMMUNITY FURLOUGH** which allows selected inmates to enter the community for certain purposes such as visiting a dying relative, attend the funeral of a relative, arrange for employment, arrange for a suitable residence or other compelling reasons consistent with the public interest.

Another institutional program that not only offers assistance to an inmate in a pre-release situation, but also provides assistance after release is the program offered by the **DIVISION OF VOCATIONAL REHABILITATION**. Full-time Vocational Rehabilitation Counselors are assigned to both the men's and women's units of the institution. These counselors work with inmates who have applied for VR services by determining the types of assistance the inmate will need in order to secure gainful employment after their release. This assistance may be in terms of training, a college education, medical services, job leads, or assistance with purchasing clothing suitable for employment.

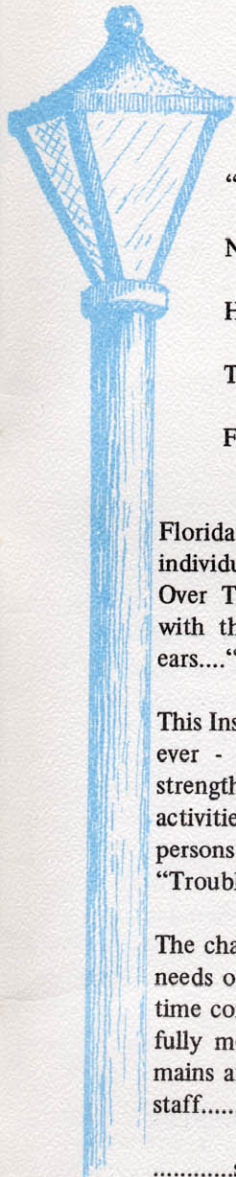


A special program at the women's unit of the institution which has contributed greatly to the overall rehabilitative program is the course in **CHARM AND PERSONAL IMPROVEMENT**. This course has been developed in order to expand the institutional spectrum of educational experiences in personal development and vocational competency. Through this program the institution attempts to assist each woman in the institution to keep abreast of the latest fashions and to maintain and improve her feminine qualities. Course content includes skin care and makeup, poise and good posture, figure corrections, fashion trends, wardrobe, art of conversation and hair styling.

A course in **FAMILY PLANNING** has been developed at the women's unit in an attempt to organize the institutional education experiences around contemporary social problems. Through this course it is the intention of the institution that all inmates be properly informed of the need and methods of family planning in order that each individual might make a voluntary decision as to her own need for such planning. This course is taught in four one-hour sessions. The first session approaches family planning from the sociological viewpoint, the second from the religious viewpoint, the third from the biological approach and the fourth session deals with the medical aspects of contraceptive devices and methods.

The institution is continually evaluating the needs of the inmate population and is constantly developing new programs and activities that will assist every inmate for an eventual release.

"NOTHING IS IMPOSSIBLE"



"Nothing is impossible when you put your trust in God;
Nothing is impossible when you're trusting in His Word.
Harken to the voice of God to thee; "Is there anything too hard for me?"
Then put your trust in God alone and rest upon His work;
For everything, oh everything, yes, everything is possible with God!"

Florida Correctional Institution desires that each individual who has successfully crossed the "Bridge Over Troubled Waters" will leave this institution with the chorus of it's theme song ringing in his ears...."Nothing Is Impossible."

This Institution has dedicated itself to a continuous; ever - changing program which will significantly strengthen the "Bridge" of programs, experiences, activities and opportunities which will enable all persons who come this way to safely pass over own "Troubled Waters" into successful future.

The challenge facing this institution is limitless; the needs of its inhabitants are legion; the pressure of time constrict its efforts; but the desire to successfully meet the needs of all who pass this way remains aflame in the hearts and lives and work of its staff.....

.....so that Florida Correctional Institution can truly be.....

"A BRIDGE OVER TROUBLED WATERS"

“If we work upon marble, it will perish. If we work upon brass, time will efface it. If we rear temples, they will crumble into dust. But if we work upon men’s immortal minds, if we imbue them with high principles, with the just fear of God and love of their fellow man, we engrave on those tablets something which no time can efface, and which will brighten and brighten to all eternity.”

DANIEL WEBSTER